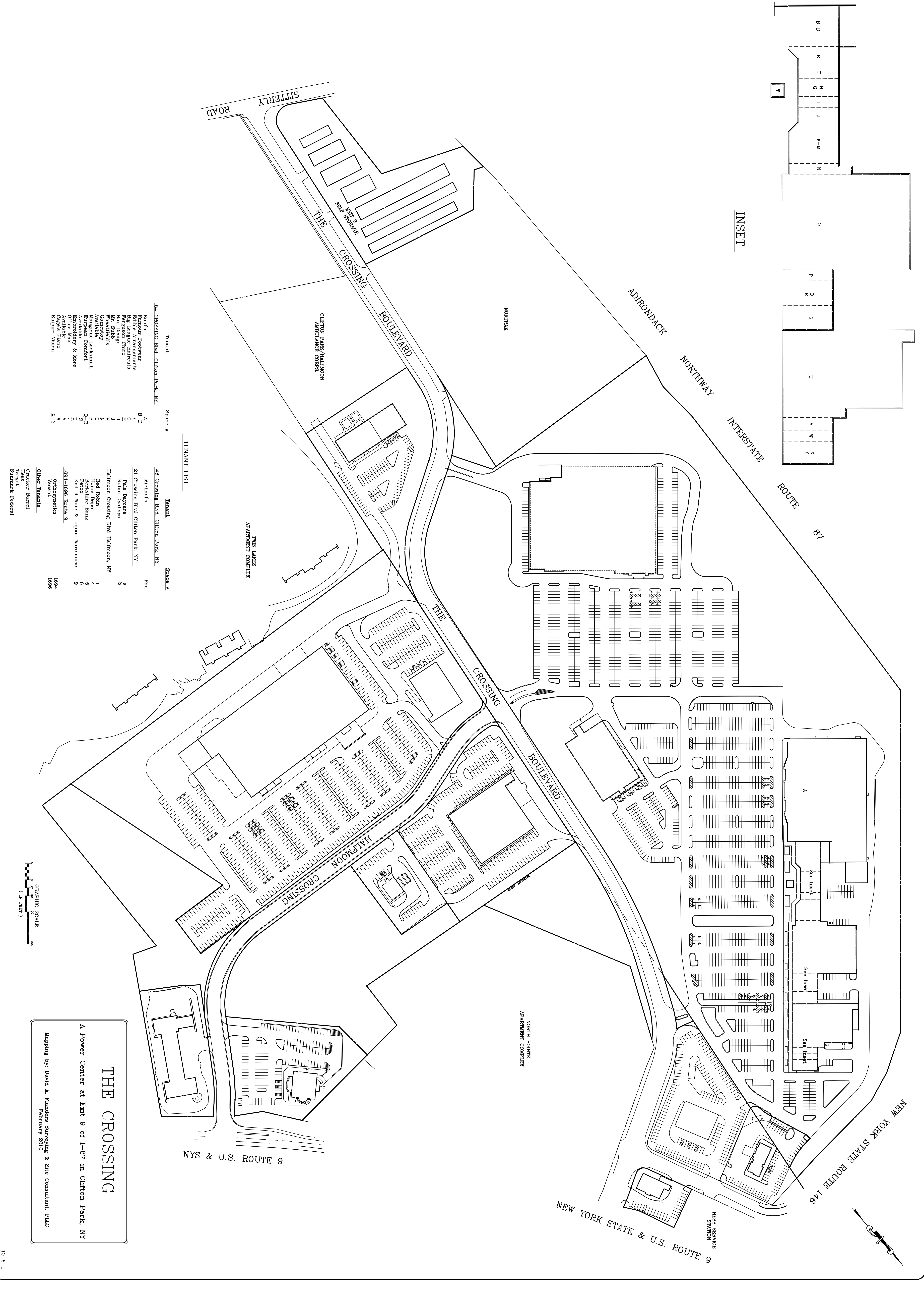
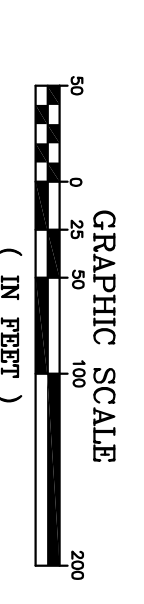


INSET



Tenant	Space #	Tenant	Space #
54. CROSSING Blvd. Clifton Park, NY	A	48. Crossing Blvd. Clifton Park, NY	1
Kohl's	B-D	Michael's	2
Primus Footwear	E	21. Crossing Blvd Clifton Park, NY	3
Primus Footwear	F	Pals Daycare	4
Big League Haircuts	G	Robert Dynel's	5
Perrigson Chiro	H	Halmoon Crossing Blvd Halmoon, NY	6
Kell Design	I	Red Robin	7
Wheatfield's	J	Home Depot	8
Gametecop	K	Berkshire Bank	9
Available	L	Petco	10
European Comfort	M	Park 9 Wine & Liquor Warehouse	11
Available	N	1694-1696 Route 9	12
Orthopedics	O	Orthopedics	13
Available	P	1694	14
Cage's Piano	Q-R	Vacant	15
Empire Vision	S	Other Tenants	
	T	Crocker Barrel	
	U	Hess Fuel	
	V	Summark Federal	
	W		
	X-Y		

TENANT LIST



GRAPHIC SCALE
(IN FEET)

THE CROSSING
A Power Center at Exit 9 of I-87 in Clifton Park, NY
Mapping by: David A. Flanders Surveying & Site Consultant, PLLC
February 2010